

## Nematode Management in Sweet Potatoes (including Boniatos) <sup>1</sup>

---

J.W. Noling<sup>2</sup>

Sweet potatoes are frequently damaged by root-knot and reniform nematodes. Either may cause stunting and yield loss; root-knot nematodes in the tubers may cause cracking or internal dark lesions which severely reduce the value of the potato. Several steps should be taken together to minimize nematode injury to sweet potatoes.

### General IPM Considerations

Integrated pest management (IPM) for nematodes requires: 1) determining whether pathogenic nematodes are present within the field; 2) determining whether nematode population densities are high enough to cause economic loss; and 3) selecting a profitable management option. Attempts to manage nematodes may be unprofitable unless all of the above IPM procedures are considered and carefully followed. Similarly, some management methods pose risk to people and the environment. Therefore it is important to know that their use is justified by actual conditions in a field and that certified applicators are overseeing their use.

### Symptoms

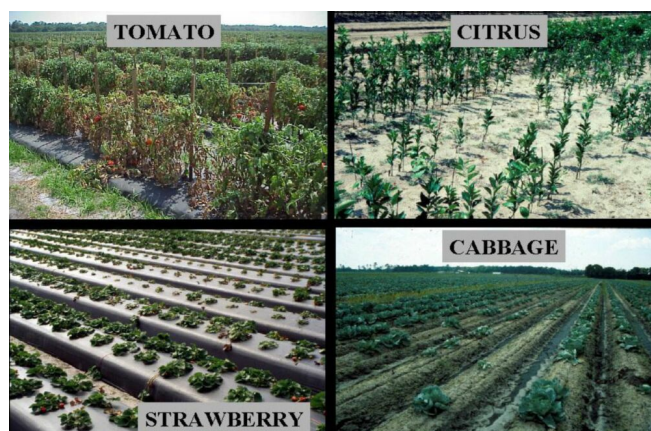
Typical symptoms of nematode injury can involve both above ground and below ground plant parts. Foliar symptoms of nematode infestation of roots generally involve stunting and general unthriftiness, premature wilting and slow recovery to improved soil moisture conditions, leaf chlorosis (yellowing) and other symptoms characteristic of nutrient deficiency. An increased rate of ethylene production, thought to be largely responsible for symptom expression in tomato, has been shown to be closely associated with root-knot nematode root infection and gall formation. Plants exhibiting stunted or decline symptoms usually occur in patches of nonuniform growth rather than as an overall decline of plants within an entire field (Figure 1).

The time in which symptoms of plant injury occur is related to nematode population density, crop susceptibility, and prevailing environmental conditions. For example, under heavy nematode infestation, crop seedlings or transplants may fail to develop, maintaining a stunted condition, or die, causing poor or patchy stand development. Under less

---

1. This document is Fact Sheet ENY-030 (formerly RF-NG030), one of a series of the Department of Entomology and Nematology, Florida Cooperative Extension Service, Institute of Food and Agricultural Sciences, University of Florida. Revised: December 2009. Please visit the EDIS Web site at <http://edis.ifas.ufl.edu>.

2. J.W. Noling, professor, Department of Entomology and Nematology, Citrus Research and Education Center, Cooperative Extension Service, Institute of Food and Agricultural Sciences, University of Florida, Lake Alfred, Florida.



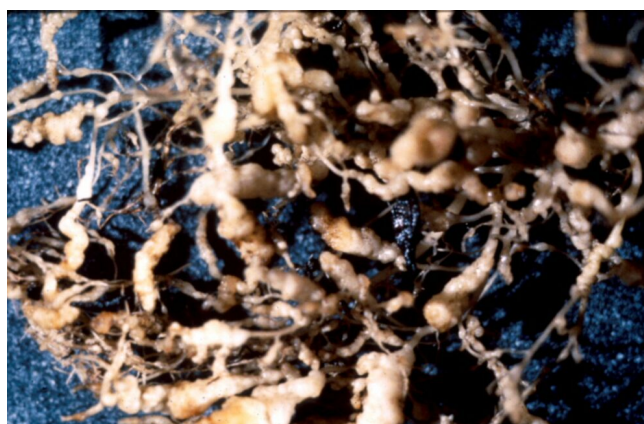
**Figure 1.** Plant stunting caused by sting (*Belonolaimus longicaudatus*) or root-knot nematode (*Meloidogyne* spp.) in various field crops. Note irregular or patchy field distribution of stunted plants rather than throughout the entire field.

severe infestation levels, symptom expression may be delayed until later in the crop season after a number of nematode reproductive cycles have been completed on the crop. In this case aboveground symptoms will not always be readily apparent early within crop development, but with time and reduction in root system size and function, symptoms become more pronounced and diagnostic.

Root symptoms induced by sting or root-knot nematodes can oftentimes be as specific as aboveground symptoms. Sting nematode can be very injurious, causing infected plants to form a tight mat of short roots, oftentimes assuming a swollen appearance. New root initials generally are killed by heavy infestations of the sting nematode, a symptom reminiscent of fertilizer salt burn. Root symptoms induced by root-knot cause swollen areas (galls) on the roots of infected plants (Figure 2). Gall size may range from a few spherical swellings to extensive areas of elongated, convoluted, tumorous swellings which result from exposure to multiple and repeated infections. Symptoms of root galling can in most cases provide positive diagnostic confirmation of nematode presence, infection severity, and potential for crop damage.

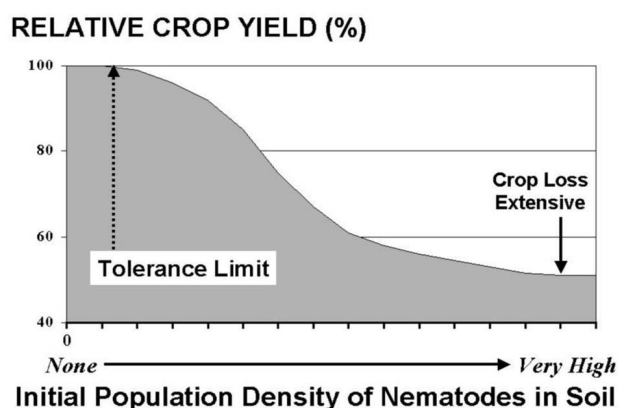
## Damage

For most crop and nematode combinations the damage caused by nematodes has not been accurately determined. Most vegetable crops produced in Florida are susceptible to nematode injury, particular



**Figure 2.** Close-up view of root-knot nematode (*Meloidogyne* spp.) induced galling of plant roots. Note the enlarged, tumorous type expansions (galls) on the roots.

by root-knot and sting nematodes. Plant symptoms and yield reductions are often directly related to preplant infestation levels in soil and to other environmental stresses imposed upon the plant during crop growth (Figure 3). As infestation levels increase so then do the amount of damage and yield loss. In general, the mere presence of root-knot or sting nematodes suggests a potentially serious problem, particularly on sandy ground during the fall when soil temperatures favor high levels of nematode activity. At very high levels, typical of those which might occur under doubling cropping, plants may be killed. Older transplants, unlike direct seed, may tolerate higher initial population levels without incurring as significant a yield loss.



**Figure 3.** Typical nematode induced crop damage relationship in which crop yields, expressed as a percentage of yields that would be obtained in the absence of nematodes, decline with increased population density of nematodes in soil. The tolerance level is identified as the initial or minimal soil population density at which crop damage is first observed.

## Field Diagnosis and Sampling

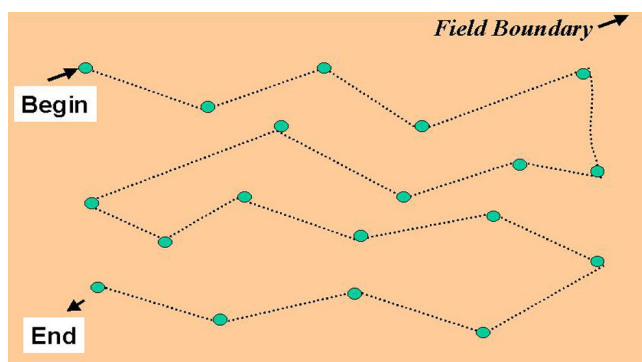
Because of their microscopic size and irregular field distribution, soil and root tissue samples are usually required to determine whether nematodes are causing poor crop growth or to determine the need for nematode management. For nematodes, sampling and management is a preplant or postharvest consideration because if a problem develops in a newly planted crop there are currently no postplant corrective measures available to rectify the problem completely once the nematode becomes established. Nematode density and distribution within a field must therefore be accurately determined before planting, guaranteeing that a representative sample is collected from the field. Nematode species identification is currently only of practical value when rotation schemes or resistant varieties are available for nematode management. This information must then be coupled with some estimate of the expected damage to formulate an appropriate nematode control strategy.

### Advisory or Predictive Sample (Prior to Planting)

Samples taken to predict the risk of nematode injury to a newly planted crop must be taken well in advance of planting to allow for sample analysis and treatment periods if so required. For best results, sample for nematodes at the end of the growing season, before crop destruction, when nematodes are most numerous and easiest to detect. Collect soil and root samples from 10 to 20 field locations using a cylindrical sampling tube, or if unavailable, a trowel or shovel (Figure 4). Since most species of nematodes are concentrated in the crop rooting zone, samples should be collected to a soil depth of 6 to 10 inches. Sample in a regular pattern over the area, emphasizing removal of samples across rows rather than along rows (Figure 5). One sample should represent no more than 10 acres for relatively low-value crops and no more than 5 acres for high value crops. Fields which have different crops (or varieties) during the past season or which have obvious differences either in soil type or previous history of cropping problems should be sampled separately. Sample only when soil moisture is appropriate for working the field, avoiding extremely dry or wet soil conditions.



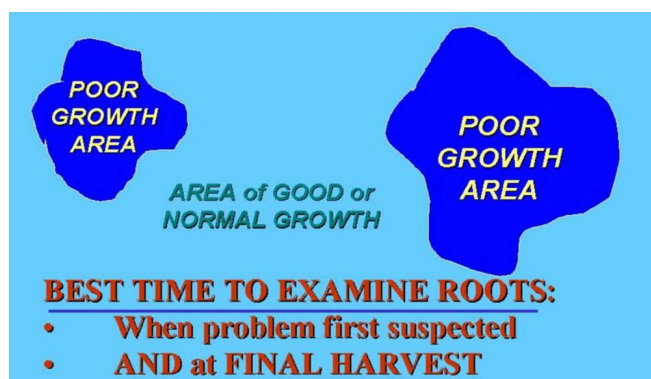
**Figure 4.** The collection of soil samples for nematode analysis can be acquired from the field using either cylindrical sampling tubes, trowels, bucket auger, or shovel.



**Figure 5.** Suggested pattern for collecting preplant soil samples for nematode analysis based on compositing soil from 10-20 field locations.

### Diagnostics on Established Plants

Roots and soil cores should be removed to a depth of 6 to 10 inches from 10 to 20 suspect plants. Avoid dead or dying plants, since dead or decomposing roots will often harbor few nematodes. For seedlings or young transplants, excavation of individual plants may be required to insure sufficient quantities of infested roots and soil. Submission of additional samples from adjacent areas of good growth should also be considered for comparative purposes (Figure 6).



**Figure 6.** Suggested strategy for collecting post-plant soil samples for nematode analysis comparing sampling results from areas of good and poor plant growth.

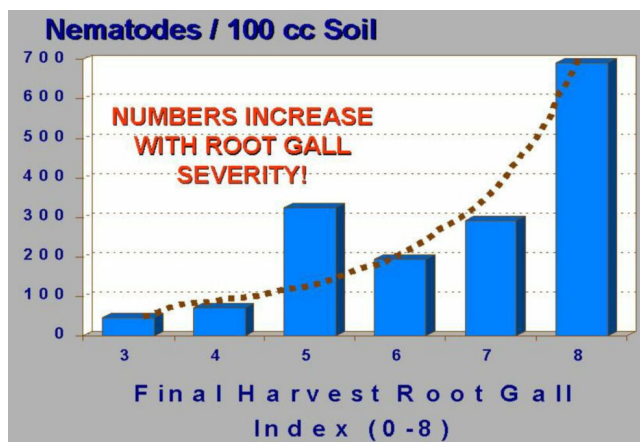
For either type of sample, once all soil cores or samples are collected, the entire sample should then be mixed thoroughly but carefully, and a 1 to 2 pint subsample removed to an appropriately labeled plastic bag. Remember to include sufficient feeder roots. The plastic bag will prevent drying of the sample and guarantee an intact sample upon arrival at the laboratory. Never subject the sample(s) to overheating, freezing, drying, or to prolonged periods of direct sunlight. Samples should always be submitted immediately to a commercial laboratory or to the University of Florida Nematode Assay Laboratory for analysis. If sample submission is delayed, then temporary refrigerated storage at temperatures of 40 to 60°F is recommended.

Recognizing that the root-knot nematode causes the formation of large swollen areas or galls on the root systems of susceptible crops, relative population levels and field distribution of this nematode can be largely determined by simple examination of the crop root system for root gall severity (Figure 7). Root gall severity is a simple measure of the proportion of the root system which is galled. Immediately after final harvest, a sufficient number of plants should be carefully removed from soil and examined to characterize the nature and extent of the problem within the field. In general, soil population levels increase with root gall severity (Figure 8). This form of sampling can in many cases provide immediate confirmation of a nematode problem and allows mapping of current field infestation. As inferred previously, the detection of any level of root galling usually suggests a nematode problem for subsequent planting of a susceptible crop, particularly within the

immediate areas from which the galled plant(s) were recovered.



**Figure 7.** Field diagnosis for the presence and severity of root-knot nematodes via visual examination of uprooted plant root systems for root galls.



**Figure 8.** Generalized relationship between the number of root-knot nematode juveniles in soil based on the level and severity of plant root galling.

## General Management Considerations

Currently nematode management considerations include crop rotation of less susceptible crops or resistant varieties, cultural and tillage practices, use of transplants, and preplant nematicide treatments. Where practical, these practices are generally integrated into the summer or winter 'off-season' cropping sequence. It should be recognized that not all land management and cultural control practices are equally effective in controlling plant parasitic nematodes and varying degrees of nematode control

should be expected. These methods, unlike other chemical methods, tend to reduce nematode populations gradually through time. Farm specific conditions, such as soil type, temperature, moisture, can be very important in determining whether different cultural practices can be effectively utilized for nematode management. In most cases, a combination of these management practices will substantially reduce nematode population levels, but will rarely bring them below economically damaging levels. This is especially true of lands which are continuously planted to susceptible crop varieties. In these cases some form of pesticide assistance will still usually be necessary to improve crop production. For further explanation and details of general management considerations in this document, see the section called "Nematode Management for Vegetable Crops in Florida".

### **Crop Rotation**

There are usually not as many root-knot or reniform nematodes where the preceding crop was a grass or small grain. Most vegetable crops are among the worst crops to precede sweet potatoes, from the standpoint of building up hazardous nematode populations. Field corn may be better than most vegetables. Do not plant sweet potatoes in the same field in successive years.

### **Varietal Resistance**

Sweet potato varieties vary in their susceptibility to the southern root-knot nematode (*Meloidogyne incognita*): 'Centennial' is very susceptible, 'Red Jewel' is susceptible, 'Georgia Red' is moderately resistant, and 'Jewel' is reported to be resistant. The resistance reported for most varieties is not sufficient to enable the grower to ignore the other steps in nematode management. "Resistance" usually provides only partial protection against the species to which the variety is "resistant" and none at all against other kinds of nematodes.

### **Nematode-Free Transplants**

Do not take nematodes or other soil-borne problems to the field by planting contaminated plants. Plant production beds should be fumigated with methyl bromide (Restricted Pesticide) or SMDC

(Vapam R or Fume-V R, not Restricted) according to label directions, and care taken to avoid recontamination of the bed after fumigation. Refer to the discussion of plant bed fumigation with multi-purpose fumigants at the end of this Section (II-E-14). If plants must be propagated from suspect soil, use un-rooted cuttings to avoid carrying potential problems into the field.

## **Chemical Control**

### **Nonfumigant Nematicides**

All of the nonfumigant nematicides currently registered for use on sweet potato are soil applied, with the exception of Vydate, which can also be applied foliarly. They must be incorporated with soil or carried by water into soil to be effective. These compounds must be uniformly applied to soil, targeting the application toward the future rooting zone of the plant, where they will contact nematodes or, in the case of systemics, in areas where they can be readily absorbed and taken up into the plant. Placement within the top 2 to 4 inches of soil should provide a zone of protection for seed germination, transplant establishment, and protect initial growth of plant roots from seeds or transplants. Most studies which have been performed in Florida and elsewhere to evaluate non-fumigant nematicides have not always been consistent, either for controlling intended pests or for obtaining consistent economic returns to the grower, particularly when compared with conventional preplant mulched fumigation with a broadspectrum fumigant nematicide (Figure 9). As the name implies, they are specific to nematodes, requiring integrated use of other cultural or chemical pest control measures to manage other weed and disease pests. Many are reasonably mobile and are readily leached in our sandy, low organic soils, thus requiring special consideration to irrigation practices and management.

Although frequently less effective than soil fumigants, the non-fumigant nematicides listed in Table 1 can provide a profitable level of nematode control if used properly. Their active ingredients are not redistributed through the soil as gases, unlike the fumigants. Therefore, uniform distribution of the products at the time of application is very important.



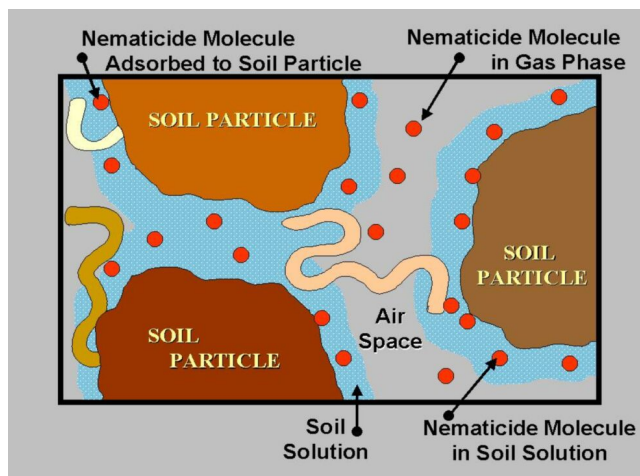
**Figure 9.** Preplant soil fumigation for nematode control.

It is very difficult to get adequately uniform distribution by rototilling over a band application. Experience in other states suggests that the best distribution of product, hence best nematode control and least chance of phytotoxicity, is accomplished by broadcast application followed by double-disking with a finishing disk set 6 to 8" deep. The beds are formed from the soil layer into which the nematicide has been incorporated, so that it is mixed throughout the beds. Uniform application appears to be especially critical for Mocap, as poor distribution may result in very little nematode control and a net decrease in yield. Apply Temik as directed on the label, throwing up the bed over a 12" band of the product.

### Fumigant Nematicides

In Florida, use of broadspectrum fumigants (Table 2) effectively reduces nematode populations and increases vegetable crop yields, particularly when compared with nonfumigant nematicides. Since these products must diffuse through soil as gases to be effective (Figure 10), the most effective fumigations occur when the soil is well drained, in seedbed condition, and at temperatures above 60°F. Fumigant treatments are most effective in controlling root-knot nematode when residues of the previous crop are either removed or allowed to decay. When plant materials have not been allowed to decay, fumigation treatments may decrease but not eliminate populations of root-knot nematodes in soil, particularly nematodes within the egg stage. Crop residues infested with root-knot nematode may also shelter soil populations to the extent that significantly higher rates of application may be required to achieve nematode control. To avoid these problems, growers

are advised to plan crop destruction and soil cultivation practices well in advance of fumigation to insure decomposition of plant materials before attempting to fumigate.



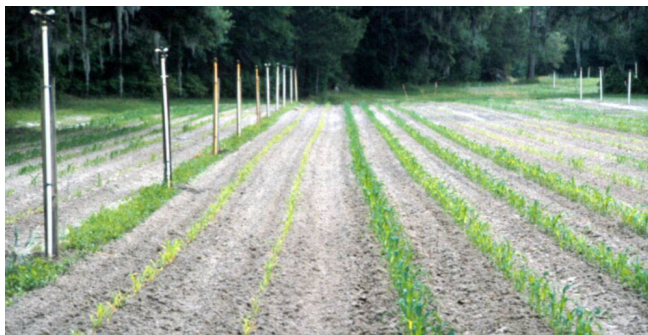
**Figure 10.** Nematode as aquatic organisms encountering both liquid and gas phase nematicides in soil.

The fumigants listed in Table 2 are applied 2 to 4 weeks before planting. They can be injected at the proper depth from chisels, with application rate regulated by a nitrogen pressurized cylinder and flow meter system. Soil treated with these fumigants may require "aeration" 1 to 3 weeks after treatment to ensure escape of the chemical from the soil. If a broadcast fumigation is used, formation of the beds should serve this purpose, but do not disturb the treated soil sooner than 1 week after treatment. Row fumigation may be done by forming a bed before or at treatment time. The fumigant chemical is injected 12 inches below the final level of the bed. Aeration may be accomplished by "boarding-off" the surface of the beds after the prescribed waiting period.

Fumigant nematicides have performed well and more consistently than non-fumigant nematicides for control of root-knot nematodes for other crops in Florida. Fumigants have also generally been superior for sweet potato nematode control in sandy soils in other states. Therefore, where root-knot nematodes are likely to damage highly susceptible varieties such as 'Centennial', a fumigant nematicide from Table 2, used according to label directions, is preferred.

All of the fumigants are phytotoxic to plants and as a precautionary measure should be applied at least 3 weeks before crops are planted. When applications

are made in the spring during periods of low soil temperature, these products can remain in the soil for an extended period, thus delaying planting or possibly causing phytotoxicity to a newly planted crop (Figure 11 & Figure 12). Field observations also suggest rainfall or irrigation which saturates the soil after treatment tends to retain phytotoxic residues for longer periods, particularly in deeper soil layers.



**Figure 11.** Sweet corn phytotoxicity to post treatment soil residuals of metham sodium.



**Figure 12.** Crop phytotoxicity of tomato to post treatment soil residuals of 1,3 dichloropropene.

overall, Integrated Pest Management (IPM) program, utilizing all available chemical and nonchemical means of reducing pest populations to subeconomic levels. An IPM approach further requires that growers attempt to monitor or scout fields for pest densities at critical periods of crop growth.

For an explanation of Tables in this document, see the section called "Explanation of Rates Listed in Nematicide Tables for Vegetable Crops" in Nematode Management in Commercial Vegetable Production.

## Summary

In summary, nematode control measures can be conveniently divided into 2 major categories including cultural and chemical control measures. None of these measures should be relied upon exclusively for nematode management. Rather, when practical and economics permit, each management procedure should be considered for use in conjunction with all other available measures for nematode control and used in an integrated program of nematode management. In addition to nematodes, many other pests can cause crop damage and yield losses which further enforce the development of an

**Table 1.** Non-fumigant nematicides for sweet potatoes in Florida.

Product	When to Apply	Application Pattern	Incorporation Depth	Rate
Mocap 15G	2 to 3 wks preplant	Row, 12 to 15" band	2 to 4" with rotary hoe, tiller, etc. or by bedding over the band	20 to 26 lbs/A or 1.6 to 2.1 per 1000 ft of row (min. row spacing 42")
Mocap EC	2 to 3 wks preplant	Row, 12 to 15" band	2 to 4" deep	5.1 to 6.9 fl oz/1000 ft row
Temik* 15G	at planting	Row, 12" band	8 to 10" deep	10 to 20 lbs/A or 15 to 30 ozs/1000 ft of row (48 inch row spacing)
Vydate L**	Within one week before planting	Broadcast, band, or in-furrow transplant drench	4 to 6" deep	2 gal/A broadcast or 1 to 2 gals/A in-furrow (Consult table for specific instructions and other uses.)

\*Reporting intended use of Temik. In response to concern about potential for contamination of ground water, the Florida Department of Agriculture and Consumer Services requires, at least 30 days prior to the date of application, submission of form DACS 130309. Further, all applications must be made with Positive Displacement Applicators preapproved under the manufacturer's equipment certification program. Consult the label for other use restrictions which apply including, soils, rotation crops, grazing, irrigation, field placarding, and mandatory buffer zones.

\*\*Vydate L has registration for nematode control on sweet potatoes only as a broadcast or in-furrow treatment. Foliar applications are registered for insect control only. For broadcast or in-furrow treatments, Vydate L should be applied in a minimum of 20 gals of water. As a broadcast treatment thoroughly incorporate to a soil depth of 4-6".

**Table 2.** Fumigant nematicides for sweet potatoes in Florida.

Nematicide	Broadcast Application <sup>1</sup>		In the Row Applications
	Gallons or Lbs per acre	Fl oz/1000 ft / chisel spaced 12" apart	
Telone II <sup>2,3</sup>	9 to 12 gal	26 to 35	For any row spacing, application rates given may be concentrated in the row, but shall never exceed the labeled maximum for broadcast applications. Consult the product label for additional detail.
Telone C-17 <sup>2,3</sup>	10.8 to 17.1 gal	31.8 to 50.2	For any row spacing, application rates given may be concentrated in the row, but shall never exceed the labeled maximum for broadcast applications. Consult the product label for additional detail.
Telone C-35 <sup>2,3</sup>	13 to 20.5 gal	38 to 60	For any row spacing, application rates given may be concentrated in the row, but shall never exceed labeled maximum for broadcast applications. Consult the product label for additional detail.
Pic-Clor 60	19 to 31.5 gal	57 to 90	For any row spacing, application rates should never exceed the labeled maximum for broadcast applications. Consult the product label for additional detail.
Vapam HL	75 gal	-	For drip or in-row chisel fumigation, consult product label for proportionately reduced overall rates, drip concentration and flow modifying directions and procedures.



**Table 2.** Fumigant nematicides for sweet potatoes in Florida.

<p>KPam HL</p>	<p>60 gal</p>	<p>-</p>	<p>For drip or in-row chisel fumigation, consult product label for proportionately reduced overall rates, drip concentration and flow modifying directions.</p>
<p><sup>1</sup>Gal/acre estimated for row treatments to help determine the approximate amounts of chemical needed per acre of field.  <sup>2</sup>All of the fumigants mentioned are for retail sale and use only by state certified applicators or persons under their direct supervision. New supplemental labeling for the Telone products must be in the hands of the user at the time of application. See label details for additional use restrictions based on soil characteristics, buffer zones, and requirements for Personal Protective Equipment (PPE).  <sup>3</sup>Higher application rates are possible in the presence of cyst-forming nematodes .</p>			
<p>Rates are believed to be correct for products named, and similar products of other brand names, when applied to mineral soils. Higher rates are required for muck (organic) soils. However, the <b>grower</b> has the final responsibility to see that each product is used legally; <b>read the label</b> of the product to be sure that you are using it properly.</p>			