



**WALCOOM**

Walcoom Corporation

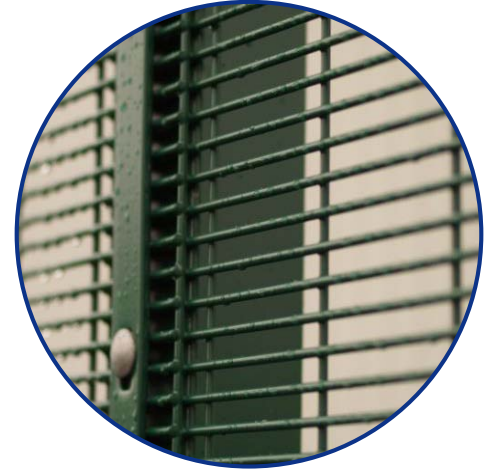


**WELDED WIRE FENCE**

[www.walcoom.com](http://www.walcoom.com)

**"Walcoom is a trustworthy supplier to provide all types of welded wire fences. Whatever you need, just contact us."**

For more than 20 years, Walcoom Corporation has been offering different types of welded wire fences and we have helped thousands of companies find solutions in the field of agriculture, industry, commerce, transportation or military and so on. Please believe that our energetic team is and will always be creative, progressive and try our best to provide you with the top quality welded wire fence products



**Welded Wire Fence**, also called welded wire fence panels or rolls, has lots of types such as welded wire 3D security fence, double wire fence, roll top fence and welded security fence. It is made of stainless steel wire, galvanized wire or PVC coated wire.

With high strength, anti-abrasion, rust and pressure, welded wire fence is popular in different fields such as transportation, commerce, industry, agriculture, sports and so on. Various welded wire fences are available and customized according to customers' requirements.

## Features

- **High strength** — Resist impact from outside and will not be out of shape. It is difficult to be bent if you bend it.
- **Good weatherability** — Adapt to different weathers such as fierce wind, rainstorm, heavy snow, exposure to blazing sun. They won't do great harm to welded wire fence.
- **Anti corrosion** — It can resist the erosion from chemicals such as acid, alkali and other chemical products.
- **Stable structure** — They are made by welding tightly and with uniform size of meshes, the structure is firm and stable.
- **Cost effective** — You can buy the welded wire fence with a relatively proper price and it is has a very high cost performance compared with other fencing.
- **Beautiful appearance** — With smooth and flat surface, welded wire surface can be used not only for protection but also for decoration.
- **Durability** — Durable materials including stainless steel, low carbon steel and galvanized or PVC coated surface treatment ensure that welded wire fences survive in tough environments.

## Specifications of different welded wire fences

### 3D Security Fence



Welded wire 3D security fences have two or three curves in the fence. With high strength and beautiful appearance, it is widely used in gardens, schools or residential places.



- Material: Low carbon steel wire or stainless wire.
- Surface treatment: hot dipped galvanized, PVC coated, powder coated.
- Mesh size: 50 × 100 mm, 50 × 150 mm, 50 × 200 mm.
- Panel height: 1–2.4 m.
- Panel length: 2–3 mm.
- Curve quantity: 2, 3 or 4.  
 1000–1300 mm, 2 curves.    1300–1600 mm, 2 or 3 curves.    1600–1900 mm, 3 curves.  
 1900–2100 mm, 3 or 4 curves.    2100–2400 mm, 4 curves.
- Post type: peach post, square post, rectangular post and round post.

**Table 1: Panel Sizes of Welded Wire 3D Security Fence**

Mesh Size (mm)	Wire Diameter (mm)	Panel Height (mm)
50 × 100	4.50	1050, 1200, 1500, 1800, 2100
50 × 150	4.88	1200, 1500, 1800, 2400
50 × 200	4.98	1050, 1200, 1500, 1800, 2100, 2400
	4.80	1000, 1500, 2000, 2400



# WELDED WIRE FENCE

## Double Wire Fence



Welded by two horizontal wires and one vertical wire, double wire fences have a more stable structure than general fences and are extensively applied to playground, sport courts or schools.

- Material: low carbon steel, stainless steel, mild steel.
- Surface treatment: PVC coated, electro or hot dip galvanized.
- Wire diameter: 5–8 mm.
- Panel height: 1–2.4 m.
- Panel length: 2.5–3 mm.

**Table 2: Panel Sizes of Double Wire Fence**

Mesh Size (mm)	Wire Diameter (mm)		Panel Height (mm)
	Vertical One Wire	Horizontal Two Wires	
50 × 200	5.72	5.72	1200, 1800, 2400
	5.72	7.70	
	5.00	6.00	1000, 1200, 1450, 1650, 1800, 2000
	6.00	8.00	1000, 1200, 1450, 1650, 1800, 2400

## Roll Top Fence



Roll top fence has triangle shape on each top and bottom and it has become a trend in recent years. The smooth surface treatment keeps people free from harm. It is anti-corrosion, abrasion, rust and pressure. Different materials such as carbon steel, stainless steel or PVC coated are available

- Material: mild steel, stainless steel, carbon steel.
- Surface treatment: galvanized and PVC coated.
- Shapes of roll top: triangle, round.
- Horizontal wire diameter: 5–6.3 mm.
- Vertical wire diameter: 5–7.5 mm.
- Mesh opening: 50 × 100 mm, 50 × 150 mm, 50 × 200 mm.
- Fence height: 900–2400 mm.
- Panel width: 2500–3000 mm.



# WELDED WIRE FENCE



## Welded Security Fence

Welded security fence has dense meshes and thus it is difficult to grasp. With anti-climbing effect, welded security fence has a high safety factor and it is often used in schools, prisons, private houses or academies of sciences.

- Material: high quality low carbon steel, iron wire, stainless steel wire.
- Composition: posts, rails, fittings, razor barbed wire.
- Dipped wire diameter: 3–5.8 mm.
- Panel maximum size: 2.3 × 3 m.
- Surface treatment: hot-dip galvanized, cold galvanization and PVC coating.
- Color: dark green, olive green, brown, black, silver.
- Framework:
  - Rails: top, bottom, intermediate or brace rails.
  - Posts: gateposts, line posts and terminal posts.
- Fittings: nuts, thread, bolts, washer, clips, etc.

**Table 3: Recommended Mesh Size and Wire Gauge for Welded Wire Security Panels**

Items	Mesh Opening (Width × Height)	Wire Diameter Gauge	Panel Width for Post Spacing 6, 7, 8, and 10 ft. (in.)	Panel Length (Height) (ft.)
WSF511	0.5" × 2.0"	11	74, 86, 98, 122	6–21
WSF510	0.5" × 3.0"	10.5	74, 87, 99, 123	6–21
WSF509	0.5" × 3.0"	9	74, 87, 99, 123	6–21
WSF508	0.5" × 3.0"	8.5	74, 87, 99, 123	6–21
WSF506	0.5" × 3.0"	6	74, 87, 99, 123	6–21
WSF704	0.75" × 3.0"	4	74, 87, 99, 123	6–21

## Different materials of welded wire fence



### PVC coated welded wire fence

PVC coated welded wire fence can resist corrosion such as acid and alkali, besides, the anti-abrasion texture which is durable makes PVC welded wire fence can be used for a long time. In addition, the color of the welded wire fence can be customized according to clients' preference, common use colors are green, black, white.



### Stainless steel welded wire fence

Stainless steel welded wire fence has a high strength so it can resist impact from outside. Besides, it has a high adaptability to different environments, especially tough conditions. Farms, forests, prisons and other military places are usually equipped with stainless steel welded wire fence.



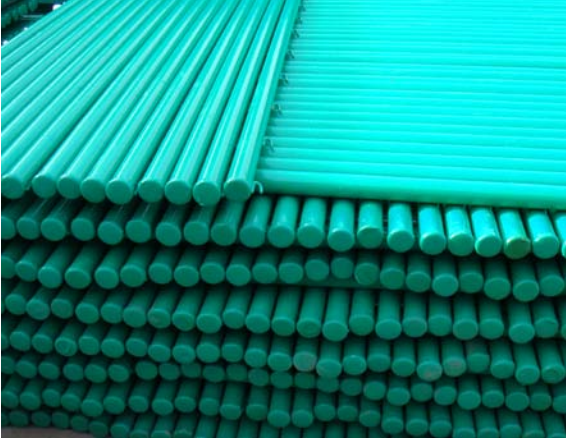
### Galvanized welded wire fence

Galvanized welded wire fence usually means hot dipped welded wire fence and it has a flat and smooth surface that doesn't rust or fade and keep bright colors all the time. Compared with other fences, galvanized welded wire fence is more environmentally friendly. What's more, when it turns dirty, it is easy for people to clean.



# WELDED WIRE FENCE

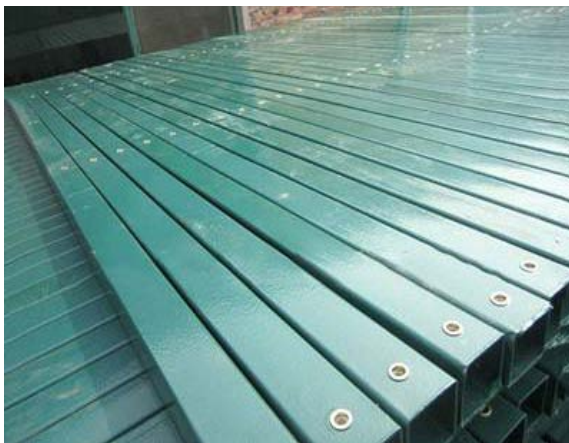
## Two main types of posts



**Round steel fence post** is made from Q195 or Q235 steel pipes with zinc coating or PVC coated.

Length: 1.5–6 m or customized.

Diameter: 32 mm – 120 mm.



**Square steel fence post** is manufactured from low carbon steel to support metal fence panels.

Length: 1.5–6 m or customized.

Size: 40 × 40 mm, 50 × 50 mm, 60 × 60 mm, 80 × 80 mm, 120 × 120 mm.

### **Rectangular post**

Size: 40 × 60 mm, 60 × 80 mm, 60 × 120 mm.

## Accessories



*Round fence post cap*

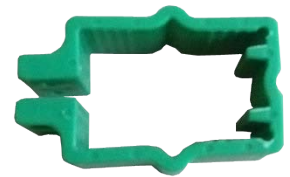


*Square fence post cap*

**Round & square fence post cap:** It can be installed on the top of the post so as to avoid something or rain and snow to drop into the post and corrode the inner surface.



*Round clamp*



*Square clamp*

**Round & square clamp:** It is used to fix the wire fence to the post and connect the neighbor panels with bolts and nuts.



*Double arm extension*

**Double arm extension:** Mainly used at the top of the round post to fasten barbed wires and razor wires for higher security.

**Single arm extension:** Mainly installed at the top of the round post for fastening barbed wires and razor wires can also be installed to improve the safety index.



*Single arm extension*

# WELDED WIRE FENCE

## Applications

Welded wire fence is extensively used in lots of places, whether in private or public places, industrial or commercial places. The following are examples.

- Railways
- Airports
- Playgrounds
- Sport courts
- Communities
- Houses
- Yards
- Schools
- Open-air parking lot
- Zoos
- Gardens
- Farmlands
- Ranches
- Factories
- Construction sites
- Military uses



*3D security fence for sport field.*



*Roll top fence in the room for decoration.*



*Dense wished welded wire fence is anti-climbing.*



*Double wire fence is installed at the side of the road.*



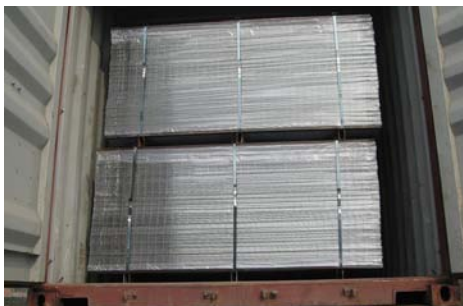
*Welded wire fence in a workshop used to protect machines.*



*Welded wire fence protects grass and trees.*

## Package

Packed in woven bags or waterproof paper.  
Packed in wooden pallets for shipping.



Welded wire fence panels are packed in a container.



Many welded wire fence panels are stored in a warehouse.



# WELDED WIRE FENCE

Walcoom Corporation



Add: No. 3481, Yongxing Road, Hengshui City, Hebei Province, China.  
Tel: +86-15030811699  
Skype: wiremesh@live.com  
E-mail: sales@walcoom.com  
Website: <https://www.walcoom.com>

